

Metering and billing; Sweden

Bertil Jönsson

National Board of Housing, Building
and Planning

Hot water, new building



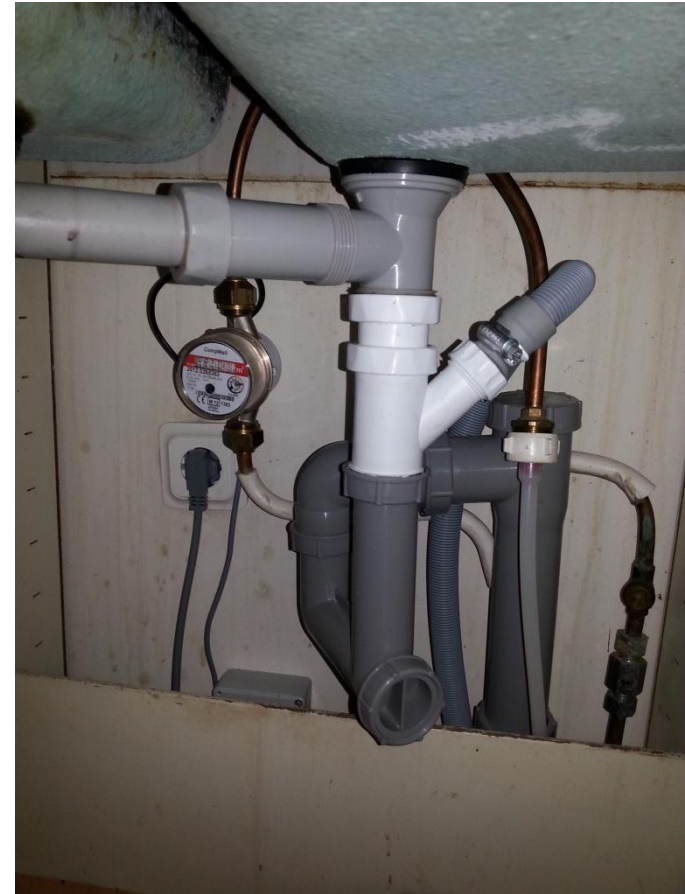
New building

- Hot water and heated water



Old building – visible pipes

- Hot water
- measuring both flow and temperature

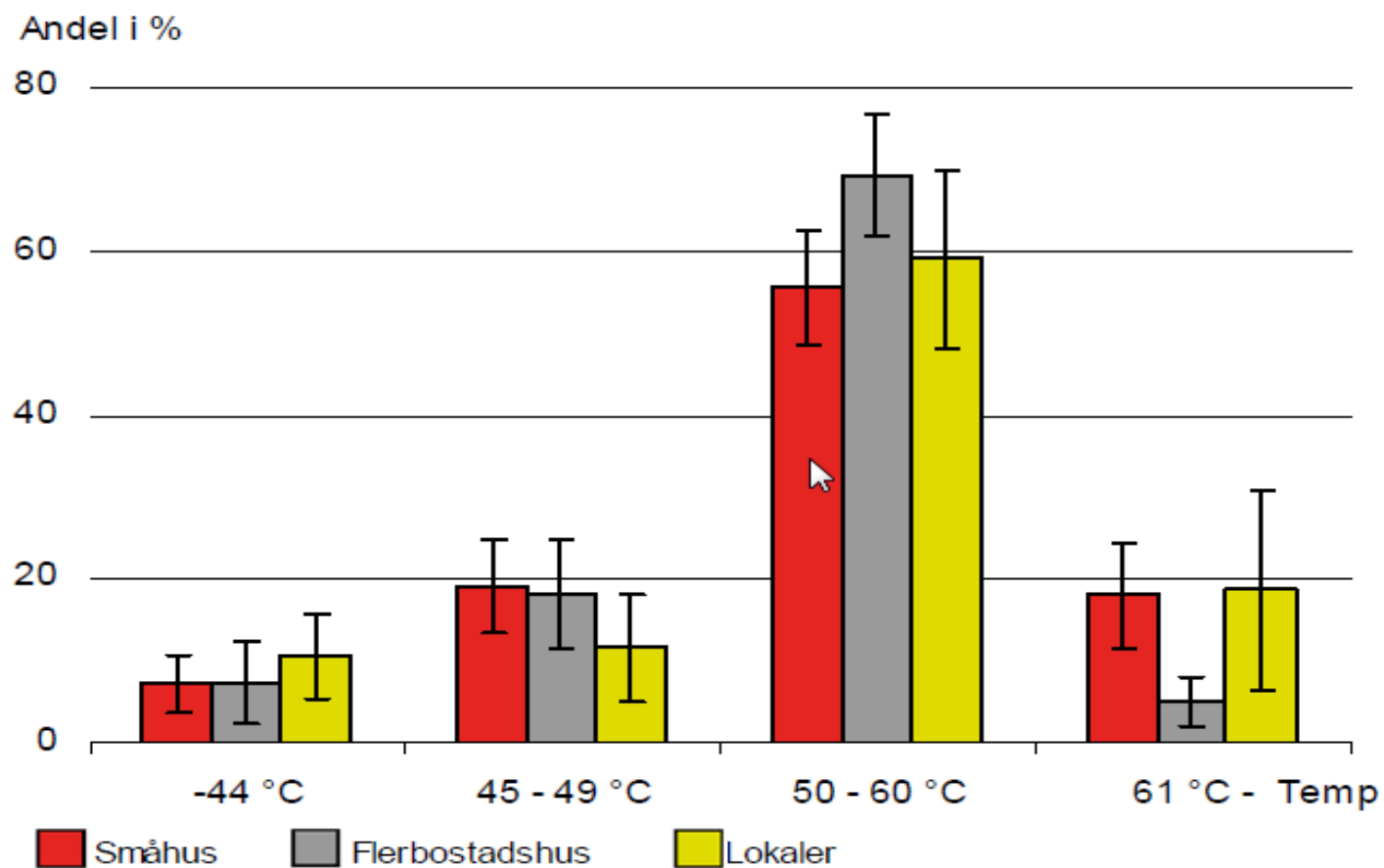


Old building – hidden pipes

- Where shall the meter be placed?



Figur 8.13 Varmvattentemperatur efter tappställe, andel småhus, lägenheter i flerbostadshus och lokalbyggnader.



Figur 8.15 Temperaturskillnad mellan varmvatten och VVC i flerbostadshus redovisat per byggår.

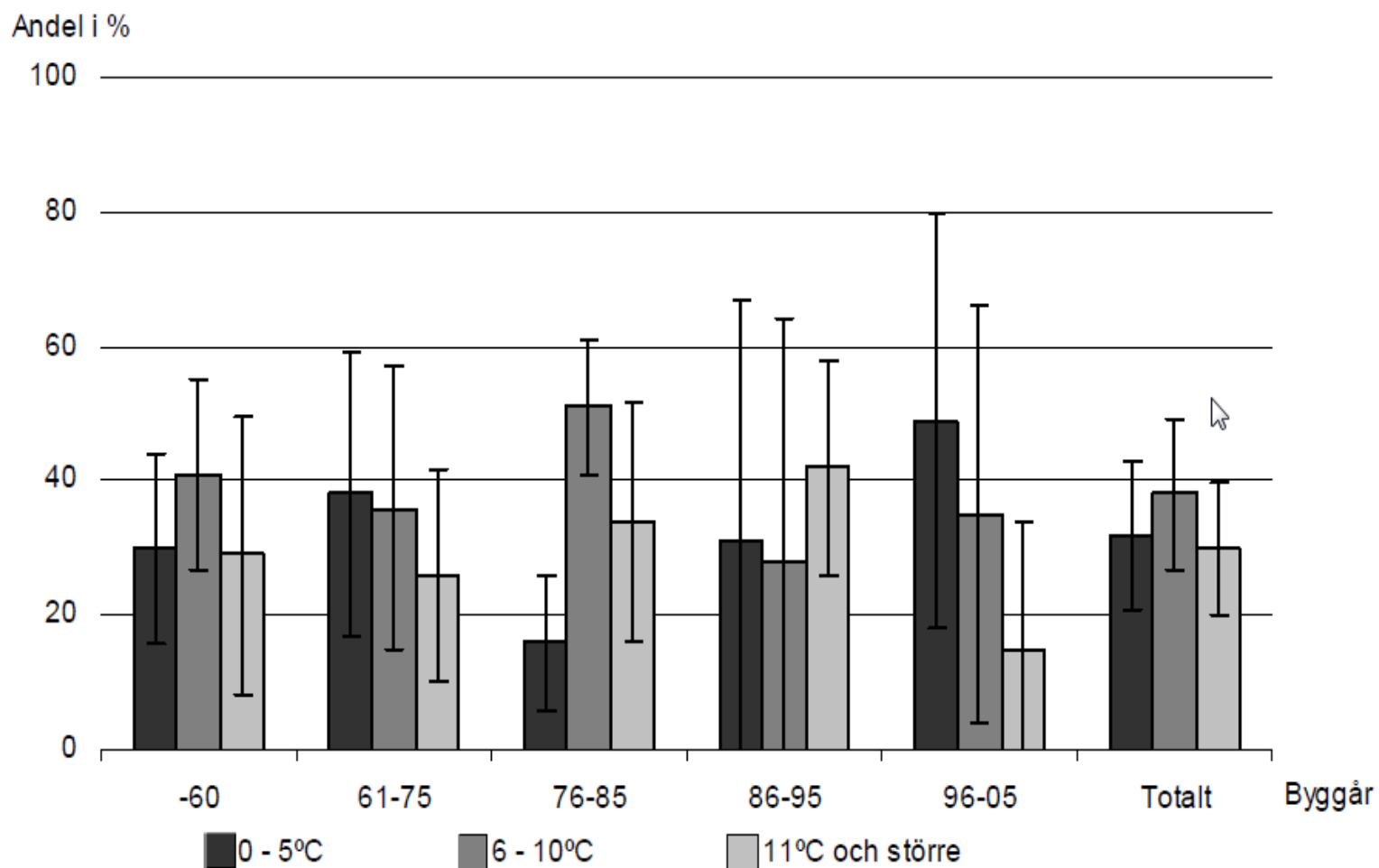


Figure 1A6 – Single family and apartment buildings in Europe

Source: BPIE survey / values for Luxembourg, Portugal, Cyprus and Belgium were estimated

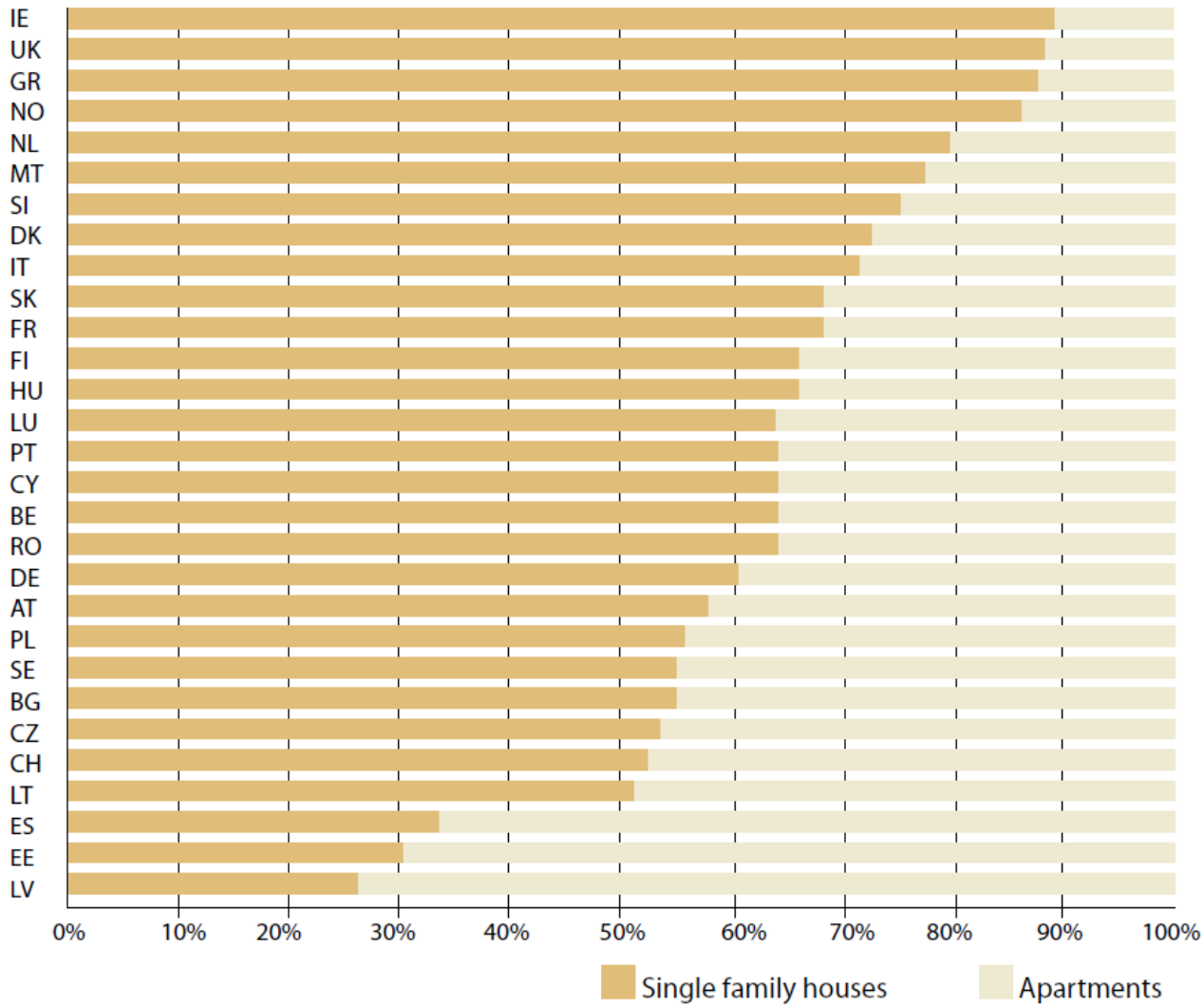
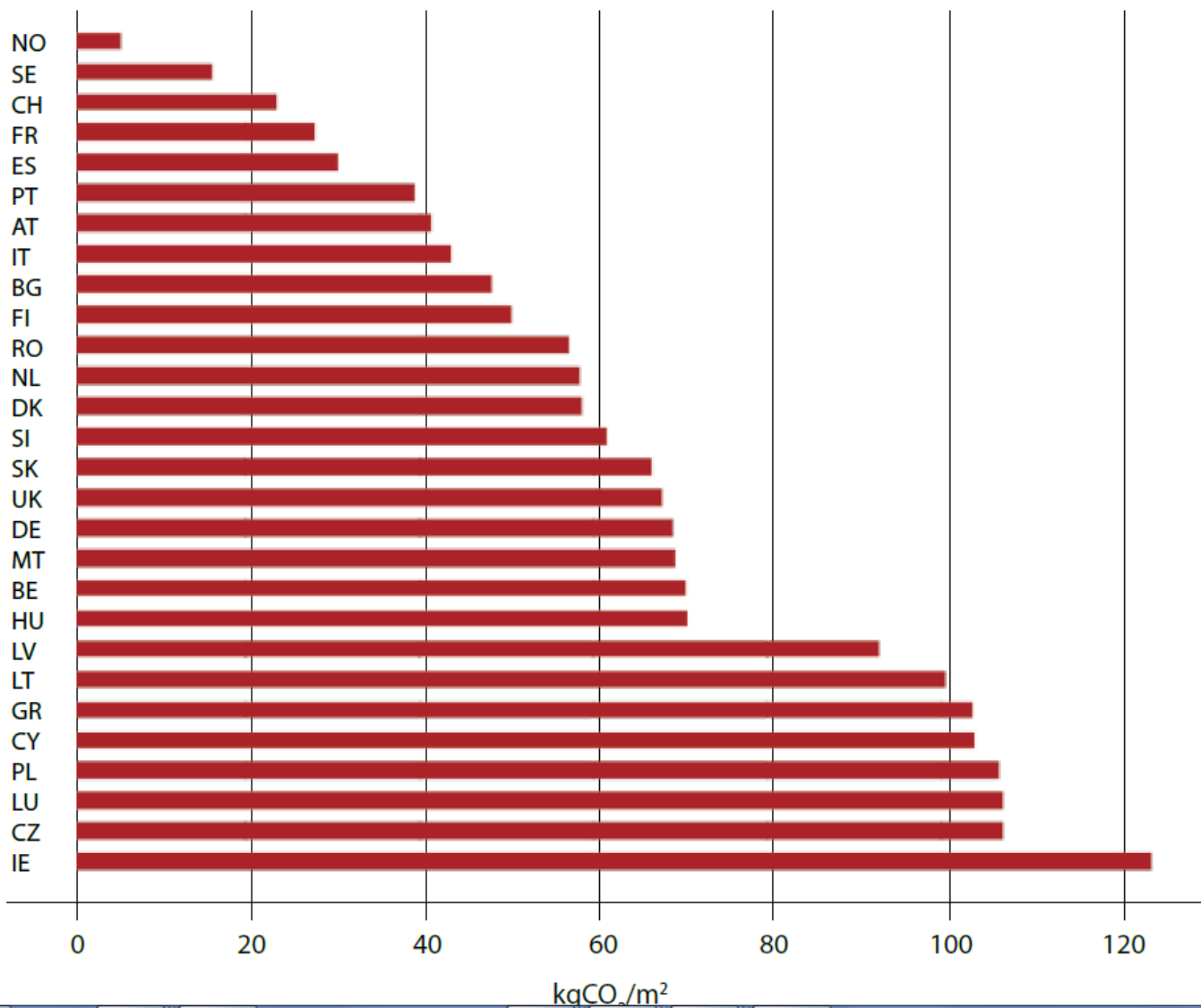


Figure 1C2 – CO₂ emission per useful floor area

Source: BPIE survey, Eurostat database



Municipality owned public housing companies in Sweden have

- Good experience with IMD and hot water
 - When building new multiapartment buildings
 - When renovating water pipes
 - Sometimes in existing multiapartment buildings, depending on the installation of water pipes

Municipality owned public housing companies in Sweden have

- Bad experiences with IMD and heating
 - Not relevant in new buildings – the energy used for heating is too low.
 - In existing buildings the most common method is "comfort measuring".
 - The temperature is measured in each apartment – 21 degrees is standard
 - The tenants pay extra or get money back depending on chosen temperature
 - Few tenants lower their indoor temperature
 - Heat transmissions through walls -> unfair