



Ministry of the Economy
DG Energy
Luxembourg

EnerCoach in Luxembourg

Energy monitoring tool for
energy consumption of public
buildings, public lighting and
transport in municipalities

CA EED, October 17th 2024



What is EnerCoach?

EnerCoach is an easy-to-use and effective energy accounting software, which acts as a database, dashboard and cockpit and has been put in place with the purpose to monitor energy and water consumption and CO₂ emissions in the framework of our national “KlimaPakt” (climate pact) with municipalities.

[\(https://pacteclimat.lu/\)](https://pacteclimat.lu/)

It enables efficient **recording, reporting** and **analysis** of:

- energy (heating and electricity) consumption (FEC)
- water consumption
- CO₂ emissions

in non-residential municipal buildings and public facilities (public lighting and vehicles).



Who can use EnerCoach ?

- Municipalities (technical service, environmental service)
- Energy experts (consultancy for municipalities within Klimapakt)

Origin and objectives ?

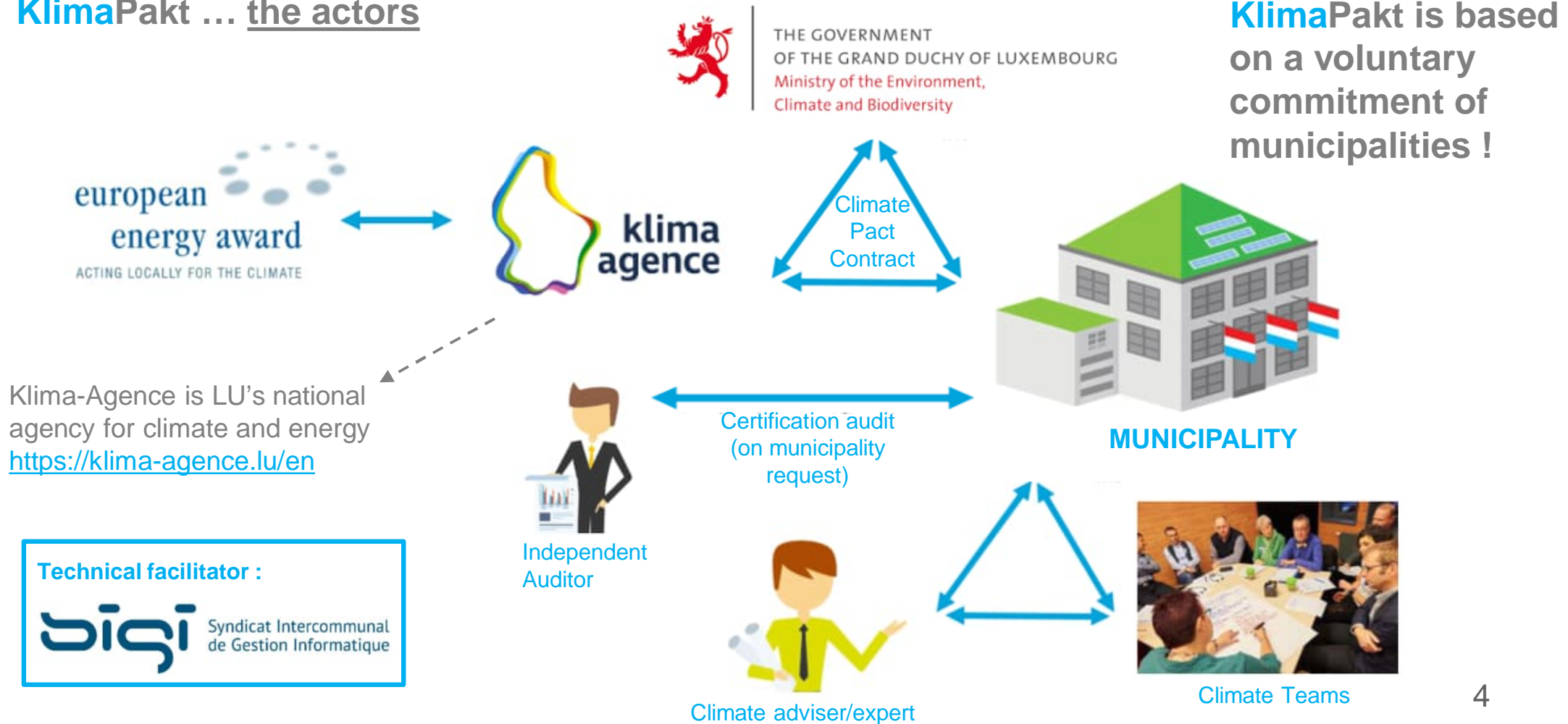
- Provided to municipalities by **SIGI** (national *Intercommunal Union of IT Management*)
- Offers municipalities the possibility of monitoring their energy consumption and costs
- Practical tool for monitoring municipalities' progress towards achieving the objectives agreed within the framework of **KlimaPakt**, a contract concluded with the State, as part of its larger strategy to achieve ambitious environmental and energy objectives (concept developed by **Klima-Agence**, the national structure for information and advice on energy transition)
- EnerCoach is used to track and confirm the achievements of the municipality → KlimaPakt subsidy program (double economic interest : costs are reduced and subsidies granted)

EnerCoach – Luxemburgish energy accounting tool



LE GOUVERNEMENT
DU GRAND-DUCHÉ DE LUXEMBOURG

KlimaPakt ... the actors

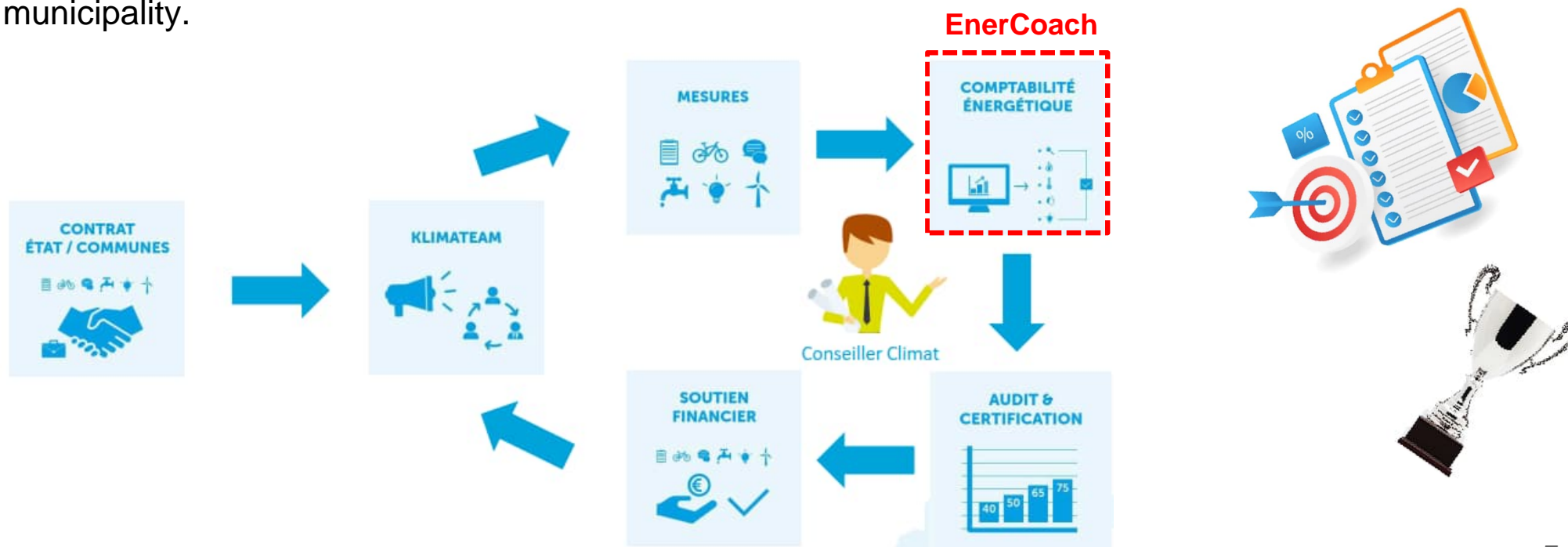




European Energy Award

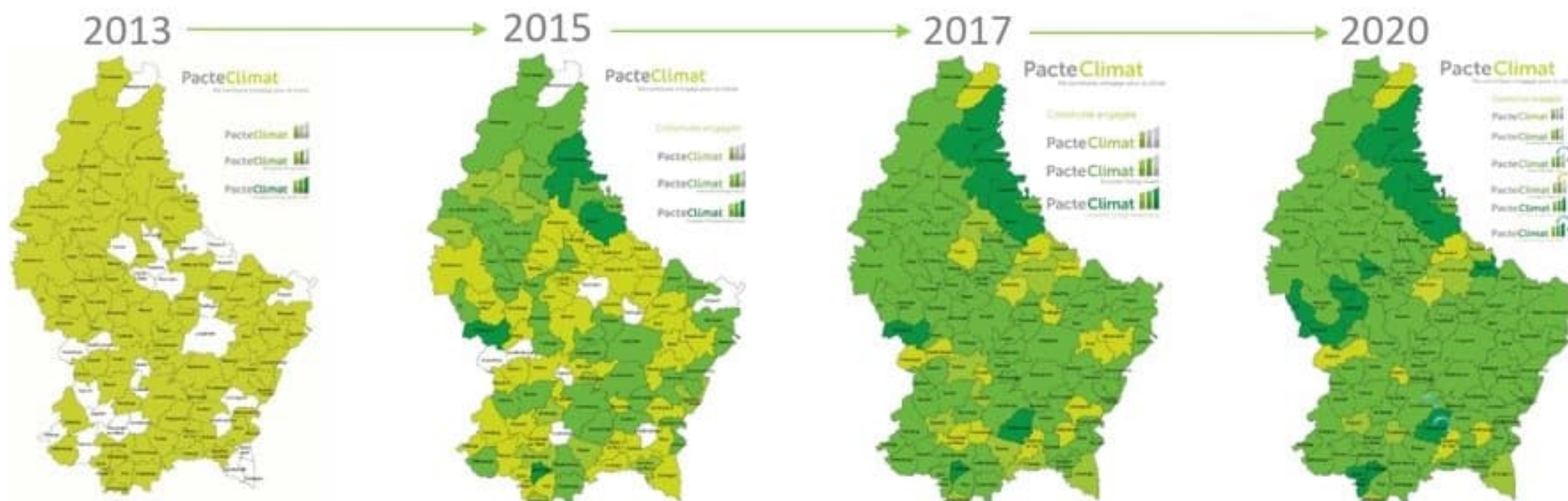


The certification system makes it possible to **assess** and **reward** the **efforts** made by the municipalities, based on the catalogue of measures and the potential for action of each municipality.





Municipalities : voluntary commitment in KlimaPakt increasing over the years (based on voluntary binding commitments)



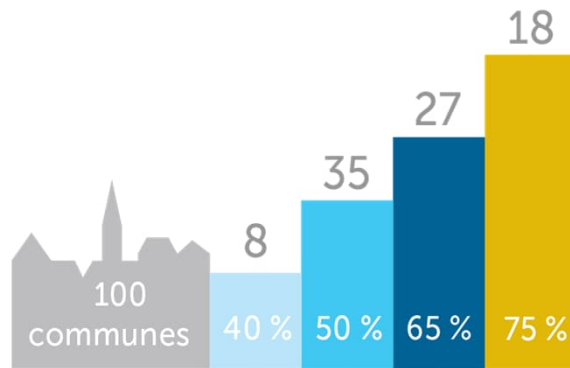
EnerCoach – Luxemburgish energy accounting tool



LE GOUVERNEMENT
DU GRAND-DUCHÉ DE LUXEMBOURG

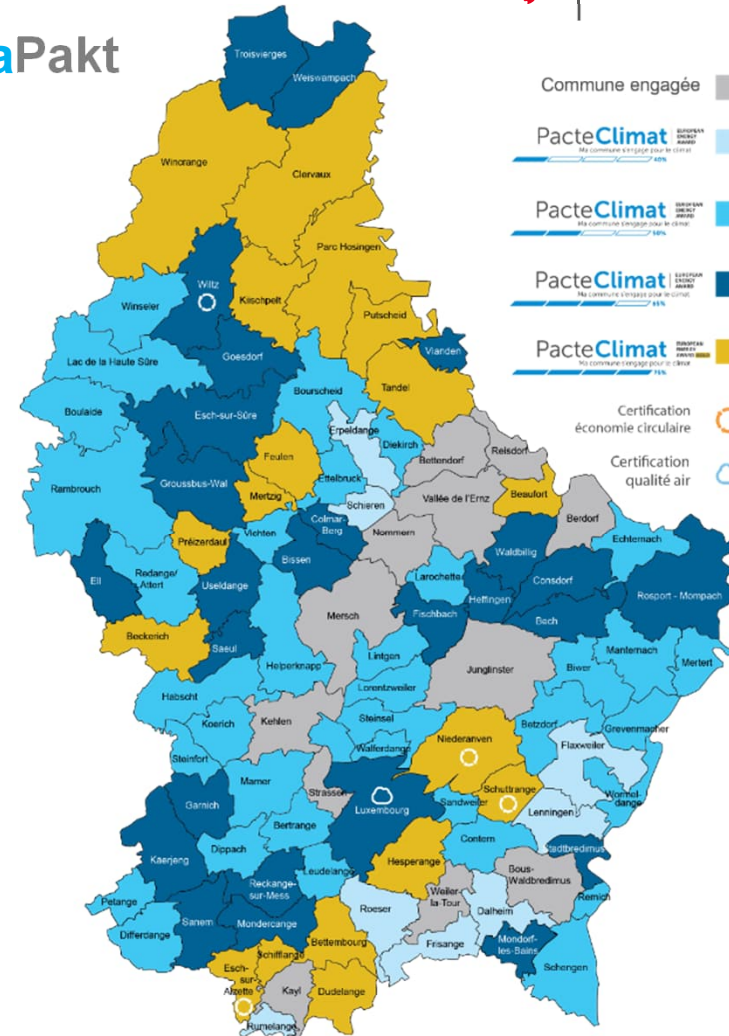
2024: ALL Municipalities committed to KlimaPakt and their level of certification

KlimaPakt | EUROPEAN ENERGY AWARD
Meng Gemeng engagéiert sech fir d'Klima



Population involved: 659'000

- 1st eea award: 2014
- 1st eea Gold award: 2015





About the EnerCoach tool

- Free (for municipalities) and easy to use (but needs discipline)
- Training and hotline support offered by Klima-Agence
- **ONE national system used by ALL municipalities** (standardization)



Advantages and lessons learned by municipalities

- Clearer vision and transparency of assets' and appliances' energy consumption
- Provides an ideal basis for saving energy and costs
- Assessment of infrastructure EE based on actual consumption
- Provides the assessments required under the Climate Pact (subsidies based on performance)
- Easier identification of poor energy performance buildings
- Analyses can be used to argument future decision-making and play an important role in local energy transition policy
- ***... prior to EnerCoach there was no systematic annual monitoring of consumptions in all municipalities, having such a tool is an eye-opener for energy monitoring and management***



EnerCoach ... a few screen-shots to illustrate the tool

(examples based on the current version EnerCoach 2.0)



Starting point: municipality, year and consumers (buildings, lighting, vehicles & others)

GESCOOM ENERCOACH

Plus → moins récent

- AC 2022
En cours de création
- AC 2021
En cours de création
- AC 2020
Clôturé
- AC 2019
Clôturé
- AC 2018
Clôturé
- AC 2017
Clôturé
- AC 2016
Clôturé
- AC 2015
Clôturé
- AC 2014
Clôturé

AC 2021

Informations

- Bâtiments fonctionnels 14
- Eclairages publics 16
- Véhicules communaux 11
- Autres consommateurs 0

Informations Rechercher un bâtiment

Informations		Nom	Catégorie
Bâtiments fonctionnels	14	Ancienne salle Judo	Autres bâtiments conditionnés
Eclairages publics	16	Ancienne auberge de jeunesse	Autres bâtiments conditionnés
Véhicules communaux	11	Atelier communal	Autres bâtiments conditionnés
Autres consommateurs	0	Conteneur école	Ecoles supérieures et univer...
		Ecole fondamentale	Ecoles supérieures et univer...
		Ecole fondamentale Cycle 1+ M.R..	Ecoles supérieures et univer...
		Hall service forestier	Autres bâtiments conditionnés
		Kummelsbau	Centres de manifestations
		Mairie	Autres bâtiments conditionnés
		Maison relais et Crèche	Jardins d'enfants et garderies
		Maison Theis	Autres bâtiments conditionnés
		Musék a Gesank	Autres bâtiments conditionnés
		Précoce	Autres bâtiments conditionnés
		Salle des sports + école préscolaire	Autres bâtiments conditionnés



Data entry: for example electricity for a given meter, per month or year, different units

Zones d'utilisations
Paramètres compl.
Chaleur
Electricité
Eau
Facteurs correction
Commentaires

▼ Compteur d'électricité Mairie 1

Annuelle
Mensuelle

Remplir index à déduire

Remarque

Identifiant compteur LDS-78507835

	janvier	février	mars	avril	mai	juin	juillet	août	septembre	octobre	novembre	décembre
Energie livrée (kWh)	587,77	622,85	656,94	570,61	499,68	498,71	500,06	541,84	559,90	574,73	593,89	596,28
Energie livrée (€)												
Energie à déduire (kWh)												
Energie à déduire (€)												
Consommation mensuelle (kWh)	587,77	622,85	656,94	570,61	499,68	498,71	500,06	541,84	559,90	574,73	593,89	596,28
Consommation mensuelle (€)	0,00	0,00	0,00	0,00	0,00	0,00	0,00	0,00	0,00	0,00	0,00	0,00

Consommation annuelle

6 803,26 kWh

0,00 €



Assessment and reports: consumptions, targets, references, limits ...

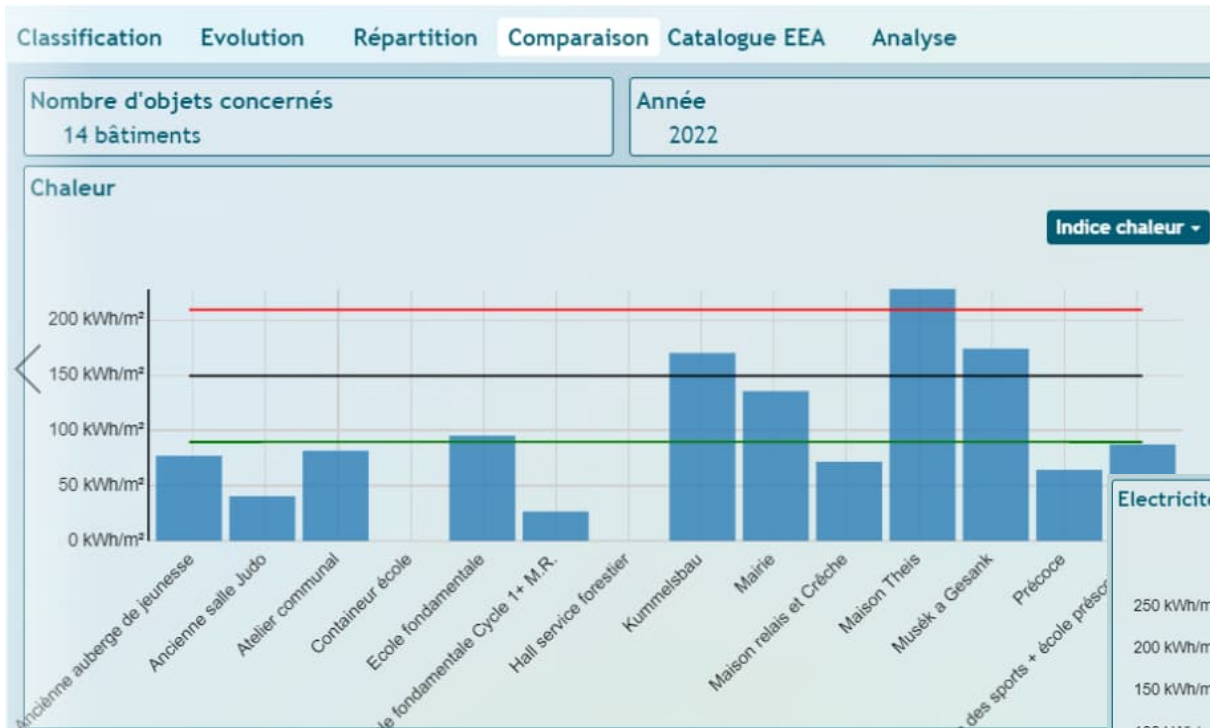


EnerCoach – Luxemburgish energy accounting tool

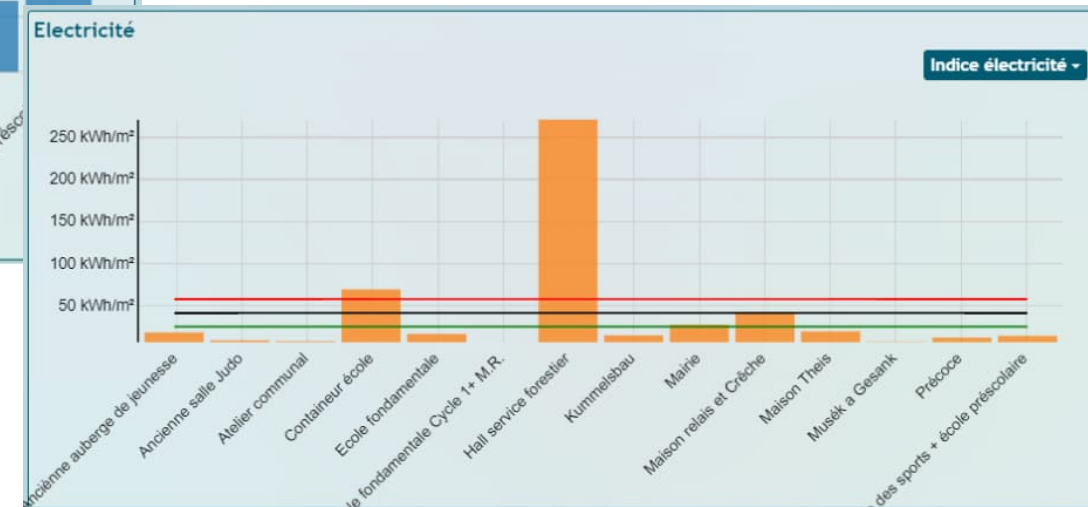


LE GOUVERNEMENT
DU GRAND-DUCHÉ DE LUXEMBOURG

Assessment and reports: consumptions, targets, references, limits ...



Benchmarking and comparison of municipal buildings in terms of heat and electricity – identification of bad performers





Evolution from EnerCoach 2.0 to the future EnerCoach 3.0 recast



Main characteristics and functionalities of EnerCoach today and tomorrow:

	Present	Future
Input, visualization and assessment of energy consumption	✓	✓
Covers municipalities : non residential buildings, lighting & vehicles	✓	✓
Energy costs management	✓	✓
Planning remediation measures / renovation strategies	✓	✓
Provides the assessments required under the Climate Pact	✓	✓
Compliant with EED Articles 5 and 6 : monitoring + reporting !	✗	✓
Covers ALL public bodies and their total FEC !	✗	✓
National monitoring and benchmark of KPI's and statistical data	✗	✓
Connectivity with energy meters (smart readiness)	✗	✓



Recast of EnerCoach will be selected through a public call for tenders → we are looking for an energy accounting/management system that is/will be **compliant with the EED Article 5 and 6 requirements and adapted to our specific national requirements**

Based on our experience with EnerCoach in the framework of KlimaPakt, **it is crucial to have ONE national system for ALL public bodies** (exceptions are possible but data will have to be entered (manually or digitally) in EnerCoach) (standardization, harmonization, one same tool for monitoring and reporting at public body, sub-group, group and national level) !

Having experience or at least knowledge and understanding of Art. 5 and 6 requirements will be an advantage for the future service provider → *any similar thoughts or experience in other MS on this are welcome, we are looking forward to discuss this with you !*

The call for tenders to recast the current version of EnerCoach will be published in the next few weeks and can be shared if you are interested !



Thank you.

Denis SIJARIĆ

Dossiers efficacité énergétique

LE GOUVERNEMENT DU GRAND-DUCHÉ DE LUXEMBOURG

Ministère de l'Économie

DG Énergie – Direction de l'Efficacité Énergétique

19-21, Boulevard Royal . L-2449 Luxembourg

Tél. (+352) 247-74116

E-mail : denis.sijaric@eco.etat.lu

www.gouvernement.lu . www.luxembourg.lu

Pascal WORRÉ

Chargé de direction efficacité énergétique

LE GOUVERNEMENT DU GRAND-DUCHÉ DE LUXEMBOURG

Ministère de l'Économie

DG Énergie - Direction de l'efficacité énergétique

19-21, Boulevard Royal . L-2449 Luxembourg

Tél. (+352) 247-84122

Gsm (+352) 621 284 854

E-mail : pascal.worre@eco.etat.lu

www.gouvernement.lu . www.luxembourg.lu